



## FAQ / Application Note

<b>Subject : PC COM port Send-Receive test tool manual</b>	
<b>FAQ Document No: G08001</b>	<b>Date: 2003/03/05</b>
<b>Model No. All Models</b>	<b>Rev. A1</b>
<b>Category: <input type="checkbox"/>General <input checked="" type="checkbox"/>H/W <input type="checkbox"/>S/W <input type="checkbox"/>Others, <u>I/O Interface</u></b>	
<b>Purpose : test RS-232/422/485 COM port with all Models, and need use internal test tool</b>	

RS-232/422/485 COM port test with all Models

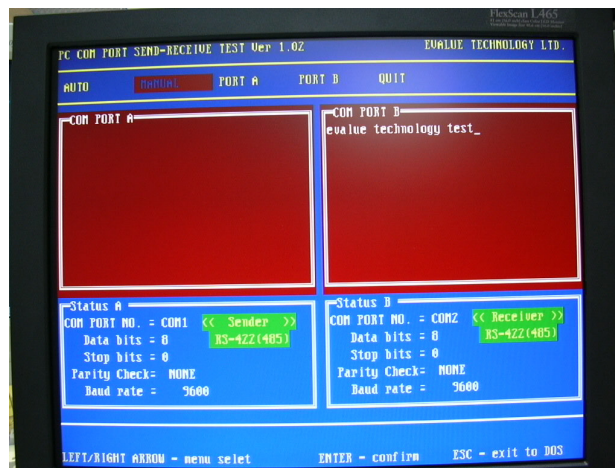
For Example: ECM-3610

1. The COMPORT connector of ECM-3610 is as below. It connected pin1 to pin1 and pin3 to pin3.

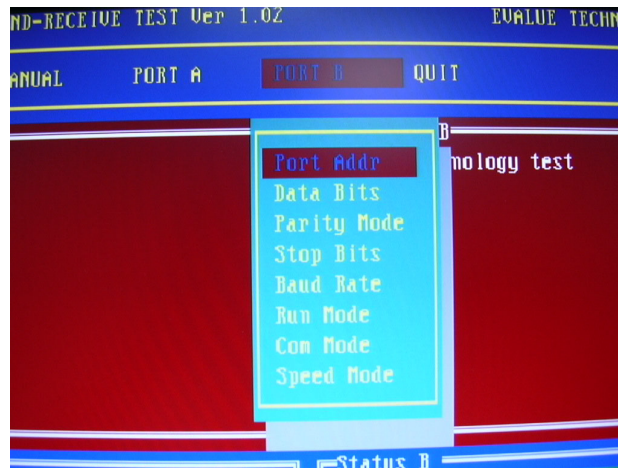


2. Execute the COM\_TEST.EXE under DOS mode

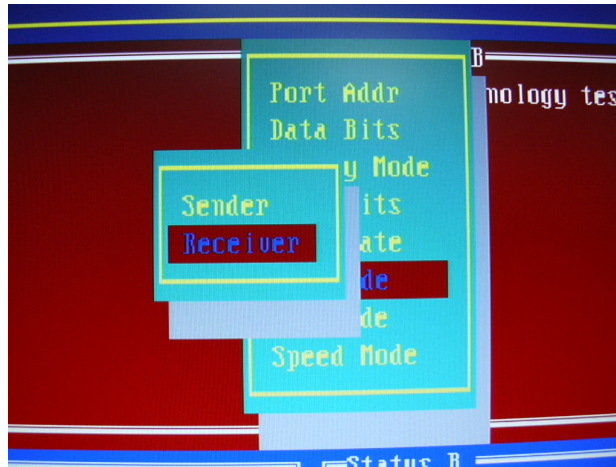
Then you will enter PC COM PORT SEND-RECEIVE TEST Ver. 1.02 as below.



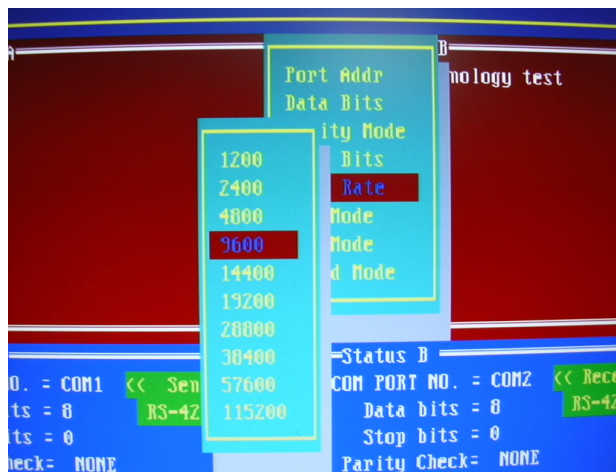
3. Select the PORT B and you can see the screen as below.



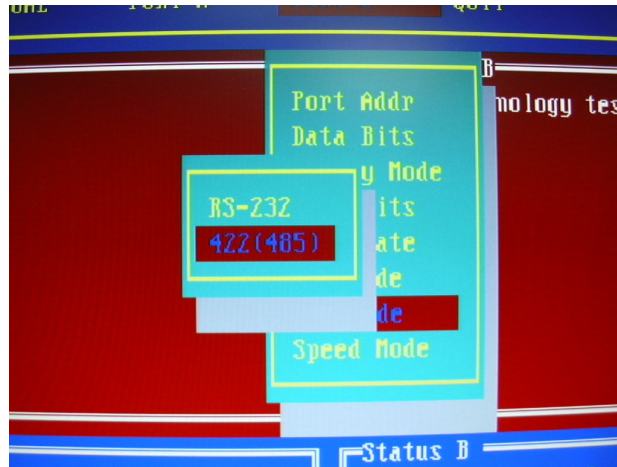
4. You must select **Sender/Receiver** under the **Run Mode** with two different boards.



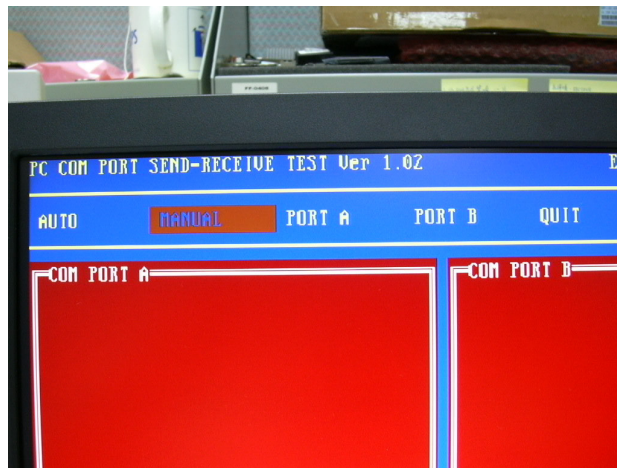
5. Select the same **Baud Rate** on two different boards.



6. Select **Com Mode** to **422(485)**.



7. Move to **MANUAL** and Click "Enter". Then you can start to test.



Note: The tool is Avalue's internal tool.