



FAQ / Application Note

Subject : How to Refresh system BIOS	
FAQ Document No: S08001	Date: 2002/12/11
Model No. All Models	Rev. All
Category: <input type="checkbox"/>General <input type="checkbox"/>H/W <input checked="" type="checkbox"/>S/W <input type="checkbox"/>Others, <u> BIOS </u>	
Purpose : Refresh system BIOS with all Models	

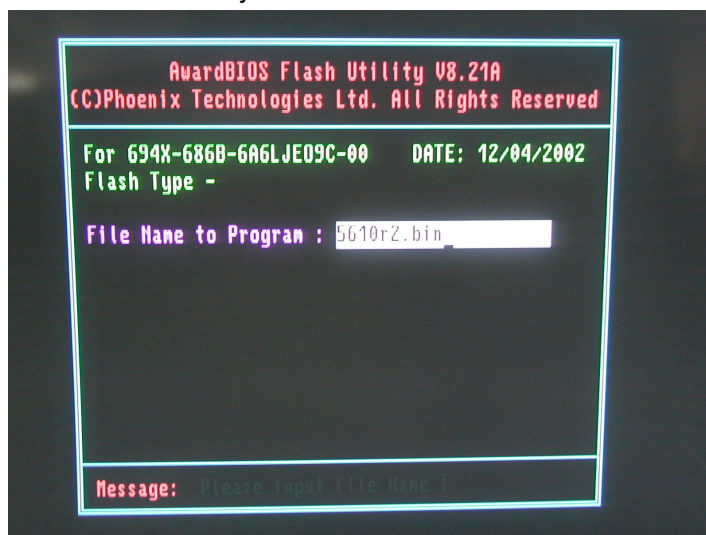
Pre-configuration :

For example ECM-5610

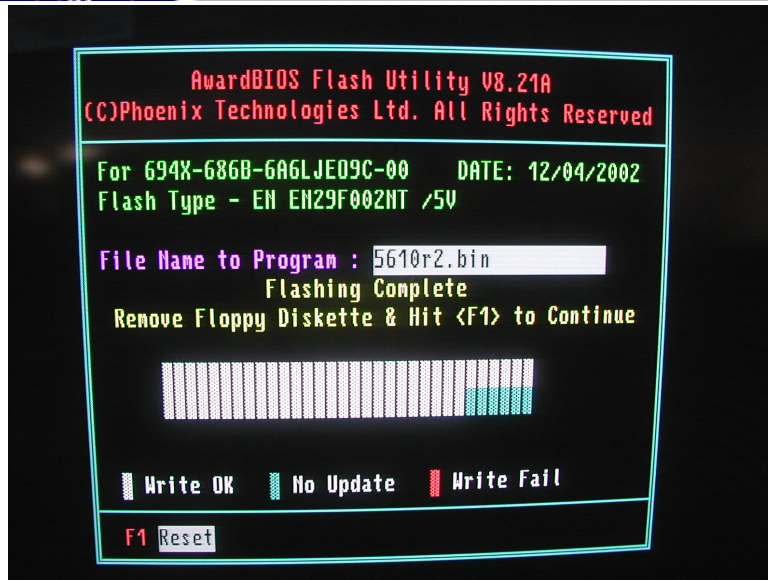
1. ECM-5610 with BIOS
2. AWDFLASH.EXE - Award BIOS refresh tool
3. 5610r2.bin – Refresh BIOS file

Process :

1. Prepare a MS-DOS boot-up disk.
2. Insert MS-DOS floppy disk, and boot up to DOS prompt.
3. Insert the disk contained AWDFLASH.EXE and 5610r2.bin.
4. Type "AWDFLASH.EXE", hit "Enter" key
5. Type "5610r2.bin" and hit "Enter" key.



6. After refreshing process, click "F1" to reboot the system.



7. "Load Optimized Defaults" in CMOS Setup Utility screen.
8. Reset "Date" and "Time"
9. Check the screen and make sure the BIOS Rev.2.00.

